

HD-CCTV Products & Solutions

Premium to your HD-CCTV



EN 2.5

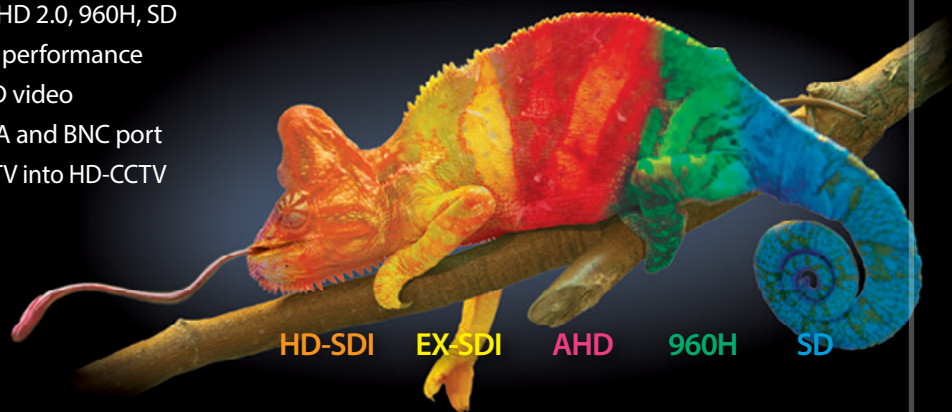
WEBGATE

Enjoy the Genuine HD Security
with WEBGATE HD-CCTV Solution

EX-SDI & AHD Hybrid DVR Series

Hybrid HD DVR with a long distance & diverse video inputs

- / Auto detection of HD-SDI, EX-SDI, AHD 2.0, 960H, SD
- / Differentiated recording & playback performance
- / Max. 400m video transmission of HD video
- / Diverse video outputs via HDMI, VGA and BNC port
- / Step by step upgrade your legacy CCTV into HD-CCTV



Multi Input DVR

- Supports HD-SDI, EX-SDI, AHD 2.0, 960H, SD
- Full-frame, Real-time recording & Playback
- Allows different video input formats per channel

Market proven product quality

- The sharpest image similar to broadcasting image quality
- Strong lightning protection : 6KV lightning arresters
- IPFR : Intelligent Power Failure Recovery
- At-the-PC Playback feature for damaged HDD

Easy to Use GUI

- User friendly menu & Setup wizard
- Digital zoom up to 10x in Live & Search mode
- Automatic HDD capacity calculation during recording setting
- Individual recording setup per channel
- Customized screen mode

Intelligent Search features

- Calendar, Smart, Thumbnail, Bookmark, Event, Text Search
- Frame-by-Frame backward playback in search mode
- Playback with ½x, 1x, 2x, 4x, 8x, 16x, 32x, 64x speed

Powerful Networking

- 1,024 DVRs can be connected simultaneously to CMS
- Up to 128 channels can be displayed on one PC
- Redistribution streaming server supports multiple client connections
- Automatic schedule backup via network
- Triple streaming(Dual H.264 & MJPEG) support
- Automatic port-forwarding via UPnP (Universal plug & play)
- RTSP(Real time streaming protocol) support (Max. 180fps)

Mobile Connection

- Live monitoring & playback for Android and iPhone
- Easy & Quick mobile connection
- Real time push alarm to smart phone

External Mass Storage Interface

- Dedicated external storage via gigabit Ethernet up to 128TB
- eSATA storage interface supporting up to 32TB

Long Distance video transmission over coax

- EX-SDI technology converts Full-HD video to the level indistinguishable from the original video, and transmits it digitally through coaxial cable up to 400m(1,200ft). DVR can receive this EX-SDI video without any additional equipment.



HS1620F-D

- 16ch DVR supporting diverse video inputs
- Max. 5 internal hard drives
- 445(W) x 418(D) x 88(H) mm



HSC821F-D

- 8ch DVR supporting diverse video inputs
- Max. 2 internal hard drives
- 350(W) x 393(D) x 88(H) mm



HSC1621F-D

- 16ch DVR supporting diverse video inputs
- Max. 2 internal hard drives
- 350(W) x 393(D) x 88(H) mm



HSC420F-D

- 4ch DVR supporting diverse video inputs
- 1 internal hard drives
- 290(W) x 232(D) x 65(H) mm

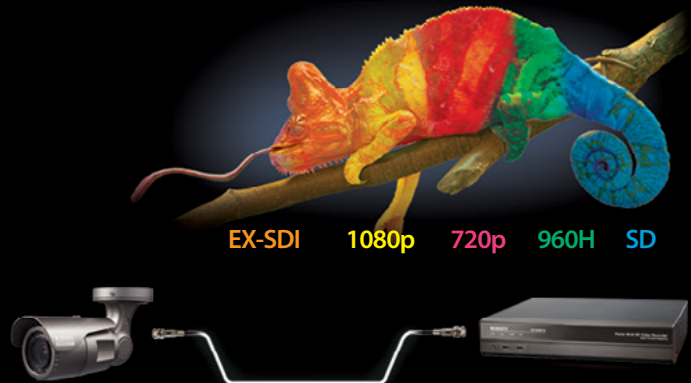
Key Features for all models

- **Standalone DVR supporting multi-video input**
- **Supports diverse video standards**
 - Digital HD : HD-SDI, EX-SDI / 1080p, 720p
 - Analog HD : AHD2.0 / 1080p, 720p
 - Analog SD : 960H, SD / 960H, 480i, 576i
- **Built-in EX-SDI receiver function for all channels** (Supports up to 400m HD video transmission without repeater)
- **Up to 30fps(25fps) recording and playback per channel**
- **Adjustable recording quality and framerate per channel**
- **High-resolutions over 1200TVL at Live/Playback for HD1080p and EX-SDI video input**
- **Supports Dual Codec(H.264,JPEG) & Multi Stream**
- **HDMI, VGA, BNC video output**
 - HDMI : 1920 x 1080 video output
 - VGA : 1920 x 1080, 1280 x 1024, 1024 x 768, 800 x 600 video output
 - BNC : CVBS. User-defined display & Alarm spot monitor support
- **Storage expansion 128TB with NS04R via gigabit Ethernet, 32TB with eSATA**
- **Date/Time, Calendar/Time-line, Event, Thumbnail(Time Interval), Text Search available**
- **Provides bundle CMS program, managing Max. 1,024 DVRs in various ways such as E-map, Viewset**
- **Java Viewer for Chrome, Firefox, Safari, Mac OS X**
- **Supports various mobile platform (iPhone/Android Viewer)**
- **Real time push alarm to smart phone by mobile application**
- **Real time fire alert to DVR, CMS and smart phone when using flame detection camera**

EX-SDI Hybrid DVR Series supporting PoC/CoC

Hybrid HD DVR with a long distance & diverse video inputs, PoC/CoC functions

- / Auto detection of diverse video formats
- / Full-frame, Real-time display & playback
- / PoC(Power over Coax) / CoC(Control over Coax)
- / Max. 400m video transmission of HD video
- / Diverse video outputs via HDMI, VGA and BNC port



One cable solution with PoC / CoC

Multi Input DVR

- Supports HD-SDI, EX-SDI, 960H, SD (HDC420F-PD only supports HD-SDI, EX-SDI)
- Full-frame, Real-time recording & playback
- Allows different video input formats per channel
- Supports max. 400m(1,200ft) HD-SDI transmission distance

Market proven product quality

- The sharpest image similar to broadcasting image quality
- Strong lightning protection : 6KV lightning arresters
- IPFR : Intelligent Power Failure Recovery
- At-the-PC Playback feature for damaged HDD

Easy to Use GUI

- User friendly menu & Setup wizard
- Digital zoom up to 10x in Live & Search mode
- Automatic HDD capacity calculation during recording setting
- Individual recording setup per channel
- Customized screen mode

Intelligent Search features

- Calendar, Smart, Thumbnail, Bookmark, Event, Text Search
- Frame-by-Frame backward playback in search mode
- Playback with 1/2x, 1x, 2x, 4x, 8x, 16x, 32x, 64x speed

Powerful Networking

- 1,024 DVRs can be connected simultaneously to CMS
- Up to 128 channels can be displayed on one PC
- Redistribution streaming server supports multiple client connections
- Automatic schedule backup via network
- Triple streaming(Dual H.264 & MJPEG) support
- Automatic port-forwarding via UPnP (Universal plug & play)
- RTSP(Real time streaming protocol) support (Max. 180fps)

Mobile Connection

- Live monitoring & playback for Android and iPhone
- Easy & Quick mobile connection
- Real time push alarm to smart phone

External Mass Storage Interface

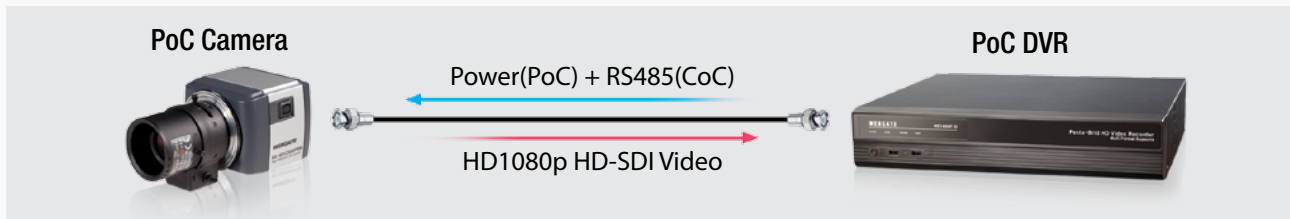
- Dedicated external storage via gigabit Ethernet supporting up to 128TB
- eSATA storage interface supporting up to 32TB

PoC(Power over Coax)

- DVR can provide power to cameras through coaxial cable
- Cameras do not need additional installation of power supply

CoC(Control over Coax)

- DVR can control camera through coaxial cable
- Supports OSD menu, Zoom/Focus control, F/W upgrade



HS1620F-PD

- 16ch DVR supporting diverse video inputs
- Max. 5 internal hard drives
- 445(W) x 418(D) x 88(H) mm



HDC420F-PD

- 4ch DVR only supporting HD-SDI, EX-SDI
- 1 internal hard drives
- 290(W) x 232(D) x 65(H) mm



HSC821F-PD

- 16ch DVR supporting diverse video inputs
- Max. 2 internal hard drives
- 350(W) x 393(D) x 88(H) mm

Key Features for all models

- **Standalone DVR supporting multi-video input**
- **Supports PoC(power over coax), CoC(control over coax)**
- **Supports diverse video standards**
 - Digital HD : HD-SDI, EX-SDI / 1080p, 720p
 - Analog SD : 960H, SD / 960H, 480i, 576i
- **Built-in EX-SDI receiver function for all channels** (Supports up to 400m HD video transmission without repeater)
- **Up to 30fps(25fps) recording and playback per channel**
- **Adjustable recording quality and framerate per channel**
- **High-resolutions over 1200TVL at Live/Playback for HD1080p and EX-SDI video input**
- **Supports Dual Codec(H.264,JPEG) & Multi Stream**
- **HDMI, VGA, BNC video output**
 - HDMI : 1920 x 1080 video output
 - VGA : 1920 x 1080, 1280 x 1024, 1024 x 768, 800 x 600 video output
 - BNC : CVBS. User-defined display & Alarm spot monitor support
- **Storage expansion 128TB with NS04R via gigabit Ethernet, 32TB with eSATA**
- **Date/Time, Calendar/Time-line, Event, Thumbnail(Time Interval), Text Search available**
- **Provides bundle CMS program, managing Max. 1,024 DVRs in various ways such as E-map, Viewset**
- **Java Viewer for Chrome, Firefox, Safari, Mac OS X**
- **Supports various mobile platform (iPhone/Android Viewer)**
- **Real time push alarm to smart phone by mobile application**
- **Real time fire alert to DVR, CMS and smart phone when using flame detection camera**

HD-TVI DVR Series - Analog HD DVR

Real-time recording HD-TVI DVR Solution

- / 4ch/ 8ch /16ch Standalone TVI DVR
- / Fully compatible with TVI 1080p & 720p video format
- / Auto detection of video format -TVI, Analog, 960H video
- / Diverse models from low-cost to high performance



Multi-Input HD DVR

- 4ch, 8ch, 16ch Standalone TVI DVR models
- Supports TVI 1080p & 720p, Analog, 960H video input

The best way to upgrade existing analog CCTV system

- Most suitable for upgrading the old Analog system to HD system
- Existing analog camera and equipment can be used without any change
- Long-distance video transmission as much as analog's

Easy to Use GUI

- Sophisticated and easy to use user interface
- Digital zoom up to 10x in Live & Search mode
- Automatic HDD capacity calculation during recording setting
- Individual recording setup per channel
- Customized screen mode

Intelligent Search features

- Calendar, Smart, Thumbnail, Bookmark, Event, Text Search
- Frame-by-Frame backward playback in search mode
- Playback with 1/2x, 1x, 2x, 4x, 8x, 16x, 32x, 64x speed

Powerful Networking

- 1,024 DVRs can be connected simultaneously to CMS
- Up to 128 channels can be displayed on one PC
- Redistribution streaming server supports multiple client connections
- Automatic schedule backup via network
- Triple streaming(Dual H.264 & MJPEG) support

Mobile Connection

- Live monitoring & playback for Android and iPhone
- Easy & Quick mobile connection
- Real time push alarm to smart phone

External Mass Storage Interface

- eSATA storage interface supporting up to 32TB (HTC1601F & HTC801F)

HTC1601F



- 16ch video input supporting diverse video standards
- TVI 1080p & 720p, Analog and 960H
- Max. 30fps@1080p per channel recording & playback
- Max. 30fps@720p per channel recording & playback
- Up to 2 Internal hard disks
- Recording storage expansion up to 32TB via eSATA storage

HTC801F



- 8ch video input supporting diverse video standards
- TVI 1080p & 720p, Analog and 960H
- Max. 30fps@1080p per channel recording & playback
- Max. 30fps@720p per channel recording & playback
- Up to 2 Internal hard disks
- Recording storage expansion up to 32TB via eSATA storage

HTC410H

HTC810H

HTC1610H



- 4/8/16ch video input supporting diverse video standards
- TVI 1080p & 720p, Analog and 960H
- Compact appearance
- Max. 15fps@1080p per channel recording & playback
- Max. 30fps@720p per channel recording & playback
- 2HDD for HTC1610H, 1HDD for HTC810H & HTC410H

C1080 Camera Series

The World's Best HD-SDI Camera Series

- / True Plug & Play by PoC/CoC
- / Built-in EX-SDI Transmitter
- / High-Resolution over 1,200TV Lines
- / 2.8~11mm IR corrective megapixel lens (Bullet, Dome)
- / Excellent Sensitivity with TDN, DSS, Smart IR
- / 2 Different Settings of Exposure & Backlight for Daytime and Nighttime
- / Easy installation by built-in Auto Focus
- / Anti-Motion Blur



C1080PBM

- 2.1Megapixel, Box Camera
- Built-in EX-SDI Transmitter (HD-SDI/EX-SDI selectable)
- Manual & DC Iris Lens
- Workable both with PoC and non PoC DVR



C1080BL-IR18 / C1080BL-IR18-AF / C1080BL-IR48-AF C1080PBL-IR18 / C1080PBL-IR18-AF / C1080PBL-IR48-AF

- 2.1Megapixel, Bullet Camera
- Built-in EX-SDI Transmitter (HD-SDI/EX-SDI selectable)
- Supports IR-LED(18EA or 48EA), Auto-Focus
- Dust-proof & Water-proof (IP66)
- PoC/CoC : C1080PBL Series



C1080D / C1080D-IR / C1080D-AF / C1080D-IR-AF C1080PD / C1080PD-IR / C1080PD-AF / C1080PD-IR-AF

- 2.1Megapixel, Plastic Dome Camera
- Built-in EX-SDI Transmitter (HD-SDI/EX-SDI selectable)
- IR-LED(24EA), Auto-Focus
- PoC/CoC : C1080PD Series



C1080VD / C1080VD-IR / C1080VD-AF / C1080VD-IR-AF C1080PVD / C1080PVD-IR / C1080PVD-AF / C1080PVD-IR-AF

- 2.1Megapixel, Vandal Dome Camera
- Built-in EX-SDI Transmitter (HD-SDI/EX-SDI selectable)
- IR-LED(24EA), Auto-Focus
- Dust-proof & Water-proof (IP66)
- PoC/CoC : C1080PVD Series



C1080PD-IR24-F3.6 / C1080PBL-IR24-F3.6

- 2.1Megapixel Plastic dome / bullet camera
- Built-in EX-SDI Transmitter
- IR-LED(24ea), 3.6mm(or 6mm) fixed lens
- PoC/CoC support



C1080PT-Z20B / C1080PT-Z10B

- Optical 20x zoom (4.7~94mm) & Digital 32x zoom
- Optical 10x zoom (5.1~51mm) & Digital 32x zoom
- High-speed 360° panning & 180° Tilting
- Dust-proof & Water-proof (IP66)
- Operating temperature adjustable built-in Fan & Heater : C1080PT-Z20B

D1080 Camera Series

*Much easier configuration
with Built-in EX-SDI Transmitter*

- / True Plug & Play by PoC/CoC
- / Built-in EX-SDI Transmitter
- / 2.8~11mm IR corrective megapixel lens (Bullet, Dome)
- / Excellent Sensitivity with TDN, DSS, Smart IR
- / 2 Different Settings of Exposure & Backlight for Daytime and Nighttime
- / Easy installation by built-in Auto Focus
- / Anti-Motion Blur



D1080BL-IR18 / D1080BL-IR18-AF D1080PBL-IR18 / D1080PBL-IR18-AF

- 2.1Megapixel, Bullet Camera
- Built-in EX-SDI Transmitter (HD-SDI/EX-SDI selectable)
- Supports IR-LED(18EA), Auto-Focus
- Dust-proof & Water-proof (IP66)
- PoC/CoC : D1080PBL-IR18 Series



D1080BL-IR48 / D1080BL-IR48-AF D1080PBL-IR48 / D1080PBL-IR48-AF

- 2.1Megapixel, Bullet Camera
- Built-in EX-SDI Transmitter (HD-SDI/EX-SDI selectable)
- Supports IR-LED(48EA), Auto-Focus
- Dust-proof & Water-proof (IP66)
- PoC/CoC : D1080PBL-IR48 Series



D1080D / D1080D-IR / D1080D-AF / D1080D-IR-AF D1080PD / D1080PD-IR / D1080PD-AF / D1080PD-IR-AF

- 2.1Megapixel, Plastic Dome Camera
- Built-in EX-SDI Transmitter (HD-SDI/EX-SDI selectable)
- Supports IR-LED(24EA), Auto-Focus
- PoC/CoC : D1080PD Series



D1080VD / D1080VD-IR / D1080VD-AF / D1080VD-IR-AF D1080PVD / D1080PVD-IR / D1080PVD-AF / D1080PVD-IR-AF

- 2.1Megapixel, Vandal Dome Camera
- Built-in EX-SDI Transmitter (HD-SDI/EX-SDI selectable)
- Supports IR-LED(24EA), Auto-Focus
- Dust-proof & Water-proof (IP66)
- PoC/CoC : D1080PVD Series

Smart Flame Detection Solution

Delicate flame detection / Prompt alarm notification / Push alarm to smart phone



Full HD fire detection CCTV solution

- 1/3", 2.1Megapixel, Full-HD camera built-in CMOS sensor
- 4/8/16ch HD recorder package provided, supporting HD1080p 30fps at each channel

Quick & accurate flame detection

- Minimizing false alarm by detecting flame wave with separate two IR sensors
- Penetration rate improved and sensitivity of sensor maximized by applying special glass
- Detecting flame within seconds
- With dedicated flame detection sensor, false report minimized in comparison with other software solutions

Smart recording & search by flame detection event

- Fire alert by audio alarm and by live pop-up on DVR screen
- Supporting pre-alarm recording prior to flame detection
- Supporting smart search as instant search/playback only for flame detection event

Supporting long-distance transmission of HD image by max. 400m through coaxial cable (EX-SDI)

Live remote-alarm

- In the presence of flame, live alarm (CMS pop-up, audio alarm) transmitted to administrator's PC (CMS) in remote through network
- Live push alarm through smart phone application (android, IOS)

Optimal set-up according to user environment

- Flame detection sensitivity customized by user environment
- Flexible control for flame detection and alarm duration time
- For PoC (Power of Coax) solution, power supplied on camera from DVR through coaxial cable and all menu set-up supported
- For Non-PoC camera, camera menu set-up supported through RS485



C1080PBL-AF-F2 C1080BL-AF-F2

- Flame detection camera
- 2.1Megapixel, Bullet Camera
- 2pcs of built in flame detecting sensor
- Detection distance & angle: 30m / 80°
- Built-in EX-SDI Transmitter (HD-SDI/EX-SDI) Selectable
- Auto-Focus, dust-proof & Water proof
- PoC/CoC: C1080PBL-AF-F2



C1080BL-F1

- Flame detection camera
- 2.1Megapixel, Bullet Camera
- 1pcs of built in flame detecting sensor
- Detection distance & angle: 30m / 80°
- Fixed lens
- Low cost compact size

HD-SDI Converter & Storage

*WEBGATE has all **necessary accessories** to configure the HD-CCTV system*

- / Converters for PoC/CoC/EX-SDI
- / Converters between HD and SD
- / Converters between SDI and HDMI
- / Fiber-Optic Transmitter/Receiver
- / DVR dedicated storage equipment



PoC/CoC and EX-SDI Converters



RP101P

- 1ch PoC Repeater
- Supports PoC/CoC, EX-SDI
- Power can be supplied from DVR



PS101P

- Power supply for PoC devices
- Supports PoC/CoC, EX-SDI



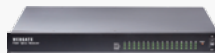
OPT-TX4-RS485P

- 4ch PoC Fiber-Optic Transmitter
- Power supply to PoC HD cameras
- Max. 20Km HD-SDI transmission
- HD-SDI Video & Data transmission



OPT-TX1 / RX1-RS485P

- 1ch PoC Fiber-Optic Transmitter/Receiver
- Power supply to PoC HD cameras
- Max. 20Km HD-SDI transmission
- HD-SDI Video & Data transmission



OPT-RX16-RS485C

- 16ch CoC Fiber-Optic Receiver
- 16 LC type Optical input, 16 BNC output
- Up to 20Km Video/Data transmission
- 19" Rack-mount type

DVR dedicated Storage Equipment



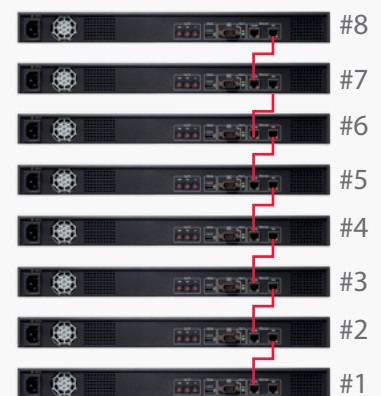
NS04R

- Dedicated storage equipment for WEBGATE DVR
- 4 Hot-Swap, SATA type hard disk bays
- Max. 128TB storage expansion by cascade connection
- Supports RAID Level 1/5/10 and Auto-Rebuilding
- IPFR(Intelligent Power Failure Recovery) file system
- At-the-PC Playback of removed DVR hard disk
- 1 Gigabit network port for DVR connection via gigabit network switch
- 1 Gigabit network port for NS04R's cascade connection

HD DVR



NS04R



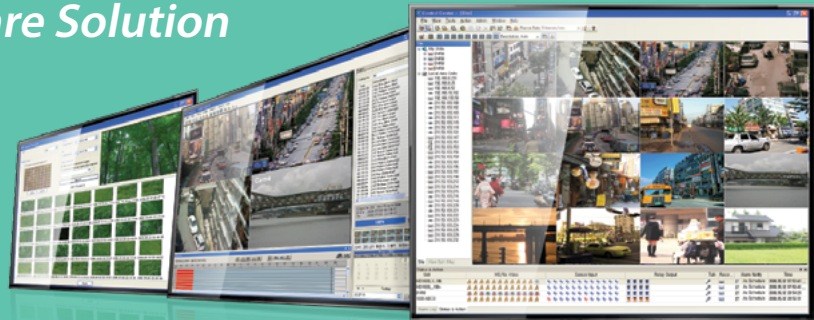
NS04R Interface
Network Interface

Note. If you visit WEBGATE's homepage, you can find the rest converters and storage equipment.

Software Solutions

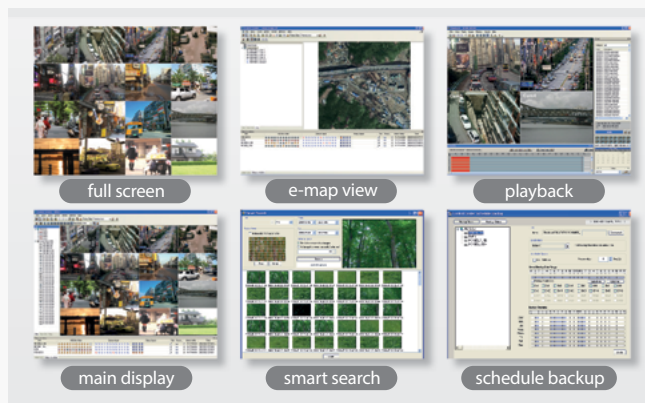
Build the complete Video Surveillance System with WEBGATE Software Solution

- / Control Center
- / WinRDS
- / WebEye
- / WESPSDK



Control Center

- Central Monitoring Software(CMS) supporting up to 1024 DVRs
- IP camera support by RTSP, RTP
- Consists of Monitoring, Playback, Setup program and Utilities
- Up to 64 split-screen per monitor
- Management of multi-monitors at a PC (Standard: 2, Pro: 6, Ent: 4+50 extended monitor)
- Supports Multi-layered Map
- Status & Action panel showing the status of connected DVRs
- Rule-based Auto Action (Pro, Ent version)
- User's Action Log Save / Search function (Pro, Ent version)
- Automatic data backup via Schedule Backup utility
- Supports all WEBGATE products including IP camera, NVR, DVR
- Superior video engine displaying 12 Full-HD video with real-time
- Supports Calendar, Timeline, Event, Text, Smart, Thumbnail search
- Composition of user-defined split-screen through View Set
- Alarm Pop-up / Sequence switching function
- User-specific permission settings
- Event Log Save / Search by event log function
- Supports USB or dedicated Joystick Keyboard (Pro, Ent version)
- Supports At-the-PC Playback



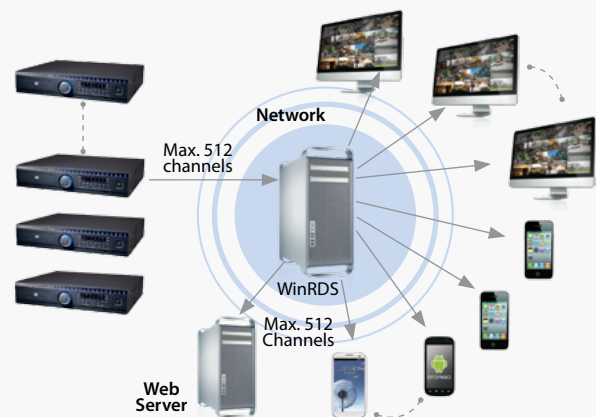
Flexible and powerful WESP SDK

WESP(WEBGATE Embedded Standard Protocol) SDK has strong flexibility and interoperability, so customers can easily develop their own applications. WESP SDK supports all functions of all WEBGATE products including software.

Streaming Solution : WinRDS

WinRDS(Windows Re-Distribution Server) is a video streaming server providing Video/Audio, Alarm/Status information to multiple users.

- Max. 100 Users registration
- Max. 512 video stream input from DVRs (up to 500Mbps)
- Max. 512 video stream distribution to clients (up to 500Mbps)
- Authority management of DVR access and channel control



Mobile App for iPhone & Android phone

WebEye is an App for iOS and Android. WebEye can manage multiple DVRs under mobile environment.

- Live monitoring, playback and PTZ control
 - Screen split 1/4/9/16 support
 - P2P connection support
 - System logs to check power failure, hard disk errors, event logs and alarm status.
 - Adjustable streaming on mobile device by various network environment
- * Smart phone push alarm when using with flame detection camera





The World's first certified
by HDcctv Alliance

WEBGATE

HD-CCTV Solution provider

Singapore Sole Distributor
Jia Ying Trading Pte Ltd

1 Rochor Canal Road
#02-67/69/34-37 Sim Lim Square
Singapore 188504
T: 63360404 F: 63380404
www.jiaying.com email@jiaying.com

Webgate Div.
Daemyung Corporation

6F, Hanlim Venture Town B/D, 689-6 Geumjeong-Dong,
Gunpo-si, Gyeonggi-do, Korea (435-862)
T. +82. 31. 428. 9333 F. +82. 31. 455. 3955
www.webgateinc.com sales@webgateinc.com